

2010 PRODUCT CATALOG



PATTERSON

SAFER. EASIER. **FASTER.**

WINCHES

RATCHET TURNBUCKLES

TENSORS

SERVICES

WARRANTY & RETURN POLICY

HOW TO ORDER

TABLE OF CONTENTS

THE PATTERSON DIFFERENCE	3	RATCHET TURNBUCKLES	12
WINCHES	4	Standard Ratchet Turnbuckles.....	13
BARGE CONNECTORS	4	Custom Ratchet Turnbuckles.....	16
YoYo Winch.....	4	Industry-Specific Ratchet Turnbuckles.....	17
Strap Winch	5	Product Accessories	19
BC-40 Winch.....	6	TENSORS	22
Manual Winch Series	7	Tensor Models.....	23
TOWBOAT WINCHES	8	SERVICES	24
Electric Winch	8	Welding, Machining and Manufacturing	24
Low-Profile Electric Winch	9	PRODUCT WARRANTY	
Upright Winch	10	AND RETURN POLICY	25
Fully Hydraulic Winch.....	11	HOW TO ORDER	28

THE PATTERSON DIFFERENCE

The Patterson Company provides a full product line for an array of industries that are specifically designed to make our customers' jobs ***safer, easier, faster.***

Every day, Patterson seeks out new ways to improve our products through innovative teamwork with our staff, customers, partners and the many esteemed professionals and experts throughout every market sector we touch. Across our product lines – from winches, turnbuckles and tensors to the delivery of superior services – that's exactly what the Patterson Company does. Our job – and our promise – is to make your jobs ***safer, easier, faster.***

No other company can deliver on this promise like Patterson. Our promise, plus the services we deliver, are our difference.

In the 1950s, Patterson began the design and manufacture of towboat and barge winches, used to hold barges in a tow to the towboat and the barges to each other. Having started with just a handful of winch sizes, we now offer 20-ton to 90-ton capacity in manual, electric and hydraulic models. By listening to the needs of industry, design changes over the years have concentrated on making our customers' jobs safer, easier, faster. This is the brand promise we delivered then, and are still delivering today – nearly 60 years later.

BARGE CONNECTORS: The YoYo Winch



Model Number	WWPYOYO
Ultimate Capacity	80,000 lbs.
Overall Width	22 3/4"
Overall Height	25 7/8"
Overall Length	35 13/16"
Typical Line Tension*	26,000 lbs.
Drum Capacities for:	
1"	25'
Weight – Net (lbs.)	1200
Weight – Shipping (lbs.)	1250

At Patterson, we have a single vision – to utilize our experience and expertise to innovatively create products that meet our customers' needs and requirements. The result is our latest patented YoYo winch – designed and proven to alleviate the problems you've been wrestling with for years.

What does that mean for you? It means no more spring coil. No more fouling. And no more problems created by uncontrolled spooling of wire rope on the drum.

Here are 10 reasons why you should be using the YoYo winch right now:

They're Safer:

1. Contained spring coil virtually eliminates injuries due to rope memory
2. Eliminates 'bird nesting' or 'fouling' or wire rope on the winch drum
3. Full gear shroud protects wire rope, gearing and operators

They're Easier:

4. Operation is simple for your crew and requires minimal, if any, guidance
5. Requires little or no re-tightening while the barge is underway
6. Easiest wire rope payout/pull-off in the industry
7. Easier to obtain higher line tension without exerting any additional effort

They're Faster:

8. Intuitive one-man operation
9. Patented double-dog design makes for easy maximum line tensioning
10. Fully open design makes the winch safe, easy and a pleasure to operate

* All performance data and specifications set forth in the above table are guidelines. The referenced data and specifications were produced under controlled testing conditions and should be used as estimates only. Due to variability in individual operators, in weather, in towing conditions, and in various other factors, actual results may vary. In addition, for the purpose of installation, please verify all dimensions as the dimensions, specifications, data and other information contained in this brochure are subject to change at any time without notice.

BARGE CONNECTORS: The Strap Winch



The patented Patterson Strap Winch boasts a fully open design with 360-degree swivel for ease of use and simplicity. Forget the 6- or 8-link chain – with the Patterson Strap Winch, all you need to do is to connect the web to a standard barge wire thimble, put the web into the slot of the drum, use the hand wheel to take up the slack, use the ratchet handle for final tensions, and you're ready to get underway.

Its fully-shrouded gearing is designed to protect the webbing, which is extremely lightweight, doesn't require tools to install, stays flexible in cold or icy weather, and is designed to float. With the Patterson Strap Winch, you won't have to worry about spring coil effect or "fish hooks," wild strands or burrs. Our patented design makes your job safer, easier and faster than ever before!

Model Number	WWP40WEB
Ultimate Capacity	80,000 lbs.
Typical Line Tension*	14,000 lbs.
Drum Capacities for:	
6" web	14'
Overall Width	20 3/4"
Overall Height	23 3/4"
Overall Length	23 3/8"
Weight – Net (lbs.)	442
Weight – Shipping (lbs.)	490

* All performance data and specifications set forth in the above table are guidelines. The referenced data and specifications were produced under controlled testing conditions and should be used as estimates only. Due to variability in individual operators, in weather, in towing conditions, and in various other factors, actual results may vary. In addition, for the purpose of installation, please verify all dimensions as the dimensions, specifications, data and other information contained in this brochure are subject to change at any time without notice.

BARGE CONNECTORS: The BC-40 Winch



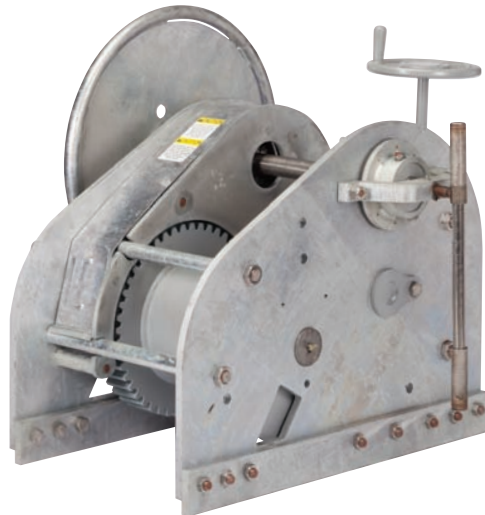
The BC-40 winch is designed for speed, durability and safety. This winch, which enables you to make-up or break-up a tow in half the time of conventional rigging using ratchets, chains, and wires, is designed and manufactured with our top-of-the-line, hot-dipped galvanizing corrosion package.

- Patented double dog design for higher line tension
- Patented open bottom design for easy clean-out
- Stud mount allows for 360 degree operation
- Heavy-duty throw-out handle for easy, fast and safe load release
- Hand brake for controlled load release
- Spinner knob on compact hand wheel for fast take-up
- Ratchet handle for final tension
- Fully shrouded
- Also available as a weld down unit

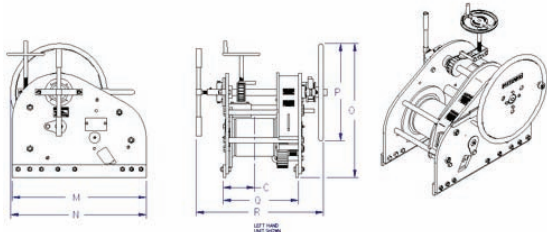
Model Number	WWP40BC
Ultimate Capacity	80,000 lbs.
Typical Line Tension*	10,000 lbs.
Drum Capacities for:	
3/4"	95'
7/8"	85'
1"	70'
Overall Width	19 3/8"
Overall Height	23 3/4"
Overall Length	23 5/16"
Weight – Net (lbs.)	442
Weight – Shipping (lbs.)	490

* All performance data and specifications set forth in the above table are guidelines. The referenced data and specifications were produced under controlled testing conditions and should be used as estimates only. Due to variability in individual operators, in weather, in towing conditions, and in various other factors, actual results may vary. In addition, for the purpose of installation, please verify all dimensions as the dimensions, specifications, data and other information contained in this brochure are subject to change at any time without notice.

BARGE CONNECTORS: The Manual Winch Series



Patterson's hand winches are designed to offer top-quality and efficiency. Our winches are available from 20- to 75-ton capacities. Galvanized winches are available for optimal corrosion protection. A saltwater option is also available.



TONNAGE DRUM WIDTH HAND
WWP 20 M - 10 - P - R
 POWER FINISH

	Performance Data* approximate (lbs.)			Drum Capacities* approximate					
	Ultimate Capacity	Break Holding Cap	Max. Line Tension	1/2"	5/8"	3/4"	7/8"	1"	1 1/8"
WWP 20M-6	40,000	40,000	5200	220'	140'	100'	xx	xx	xx
WWP 30M-10	60,000	60,000	6600	xx	120'	85'	65'	xx	xx
WWP 40M-12	80,000	80,000	8,000	xx	xx	180'	130'	100'	xx
WWP 65M-14	130,000	130,000	11,000	xx	xx	xx	230'	180'	150'
WWP 75M-10	150,000	150,000	12,000	xx	xx	xx	xx	190'	150'

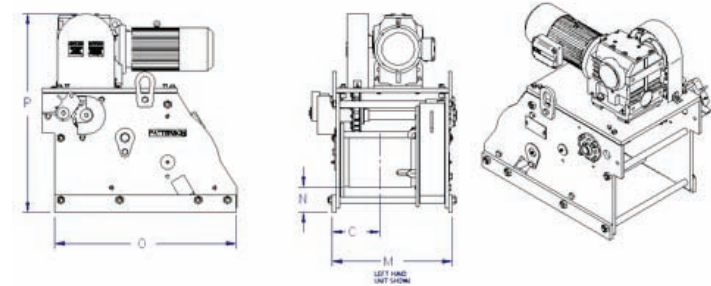
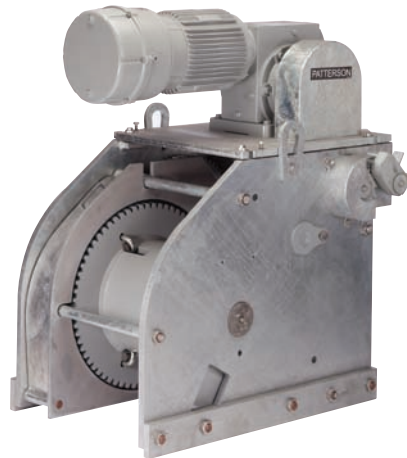
	Dimensions* approximate (in.)						(lbs.)	
	Drum Diameter	C	M	N	O	P	Weight Net	Approximate Shipping
WWP 20M-6	8.62	5.81	15	5.5	35	32.75	600	640
WWP 30M-10	10	8.81	19	4.87	35	34.25	750	800
WWP 40M-1	10	9.19	24.5	4	37	3.5	1,105	1,155
WWP 65M-14	14	10.75	25.75	5.5	40	148	1,705	1,755
WWP 75M-10	16	8	22.25	8.25	45	52	2,000	2,080

* All performance data and specifications set forth in the above table are guidelines. The referenced data and specifications were produced under controlled testing conditions and should be used as estimates only. Due to variability in individual operators, in weather, in towing conditions, and in various other factors, actual results may vary. In addition, for the purpose of installation, please verify all dimensions as the dimensions, specifications, data and other information contained in this brochure are subject to change at any time without notice.

PATTERSON

SAFER. EASIER. FASTER.

TOWBOAT WINCHES: The Electric Winch



TONNAGE HP VOLTAGE HAND
WWP 40 E - 5.0 - 14 - 230 - G - R
 POWER DRUM WIDTH FINISH

Patterson's full electric winches are designed for durability and ease of operation. Our electric winches are available from 20- to 90-ton capacities. Galvanized winches for optimal corrosion protection are also available.

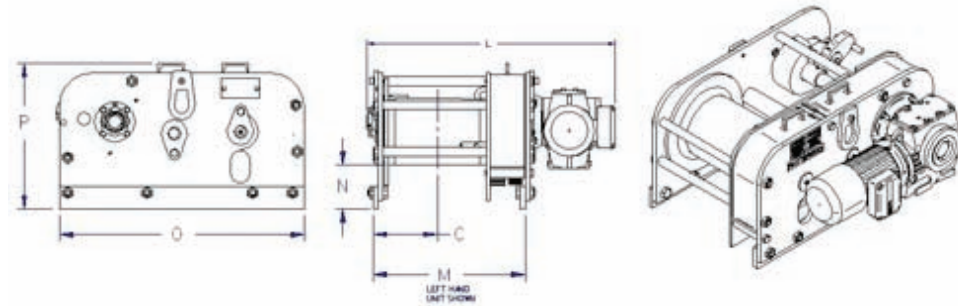
- Optional saltwater-corrosion protection package includes stainless steel shafts, nuts and bolts, hot-dipped galvanized, and anti-seize on all threads or fasteners
- Thermostatically protected motor
- Machined alloy gearing
- NEMA 4 spring-loaded electric brake
- Manual locking dog for emergency backup use
- Heavy-duty roller chain, sprockets and roller bearings
- High-strength phosphor bronze bearings
- 208V or 230/460V-3 Phase-60Hz high torque motors (other voltages available)
- Bolted keeper plate allows fast, easy shaft removal
- Rope and gear guards protect wire rope and enclose the gearing

Performance Data* approximate (lbs.)							Drum Capacities* approximate					
	Dog Holding Capacity	Brake Holding Capacity	Line Pull 1st Wrap	Line Speed 1st Wrap	Stall Pull 1st Wrap	Ult Shock Load	1/2"	5/8"	3/4"	7/8"	1"	1 1/8"
WWP 20E-3.0	40,000	43,000	6987	14.7	20,900	40,000	220'	140'	100'	xx	xx	xx
WWP 30E-3.0	60,000	47,000	7600	13.4	23,000	60,000	xx	120'	85'	75'	xx	xx
WWP 30E-5.0	60,000	33,000	9000	18	33,000	60,000	xx	120'	85'	75'	xx	xx
WWP 40E-5.0	80,000	40,000	9,000	14.5	24,000	80,000	xx	xx	180'	130'	100'	xx
WWP 40E-7.5	80,000	75,000	9,900	18	40,500	80,000	xx	xx	180'	130'	100'	xx
WWP 65E-7.5	130,000	99,000	13,000	14	36,000	130,000	xx	xx	xx	230'	180'	150'
WWP 65E-12.5	130,000	80,000	16,000	24	47,000	130,000	xx	xx	xx	230'	180'	150'
WWP 75E-12.5	150,000	90,000	19,00	21	54,000	150,000	xx	xx	xx	xx	190'	150'

Dimensions* approximate (in.)							(lbs.)	
	Drum Diameter	C	M	N	O	P	Weight Net	Approximate Shipping
WWP 20E-3.0	8.62	5.81	14.75	6.5	35	32.5	830	880
WWP 30E-3.0	10	8.81	19	5 67/77	35	32 32/33	1,015	1,065
WWP 30E-5.0	10	8.81	19	5 67/77	35	32 32/33	1,020	1,070
WWP 40E-5.0	10	9.19	24.5	5.16	37	40.15	1,415	1,465
WWP 40E-7.5	10	9.19	24.5	5.16	37	40.15	1,430	1,480
WWP 65E-7.5	14	10.75	25.75	6.5	38	48	2,140	2,190
WWP 65E-12.5	14	10.75	25.75	6.5	38	48	2,150	2,200
WWP 75E-12.5	16	8	22.25	8.25	45	52	2,400	2,450

* All performance data and specifications set forth in the above table are guidelines. The referenced data and specifications were produced under controlled testing conditions and should be used as estimates only. Due to variability in individual operators, in weather, in towing conditions, and in various other factors, actual results may vary. In addition, for the purpose of installation, please verify all dimensions as the dimensions, specifications, data and other information contained in this brochure are subject to change at any time without notice.

TOWBOAT WINCHES: The Low-Profile Electric Winch



When winch height is limited, the Patterson Low-Profile Electric Winch is your solution.

- Manual locking dog for emergency use
- The Low-Profile electric winches provide high-line speed and high-line pull
- This series of winches range from 20-ton through 90-ton capacities
- The Low-Profile winch design has fewer parts creating lower maintenance
- Full rope guard to protect the wire rope from being fouled by the gearing
- Full gear shroud to protect gearing and help provide personal protection
- Units available in right- or left-handed models
- Motor sizes range from 3 HP to 12.5 HP, 208 Volt, 230/460 Volt, 3 phase with thermostat relays
- Galvanized winches for optimal corrosion protection available

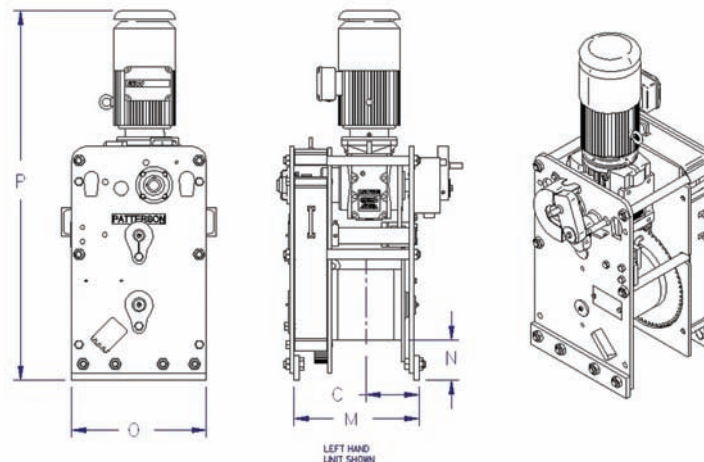
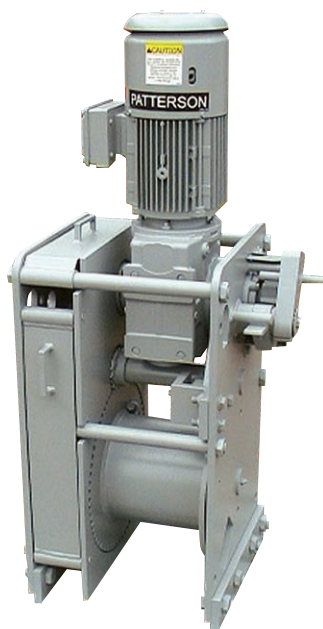
TONNAGE HP TYPE FINISH
WWP 40 E - 5.0 - 14 - LP - 230 - G - R
 POWER DRUM WIDTH VOLTAGE HAND

Performance Data* approximate (lbs.)							Drum Capacities* approximate					
	Dog Holding Capacity	Brake Holding Capacity	Line Pull 1st Wrap	Line Speed 1st Wrap	Stall Pull 1st Wrap	Ult Shock Load	1/2"	5/8"	3/4"	7/8"	1"	1 1/8"
WWP 20E-3.0	40,000	24,500	3,400	27	10,000	40,000	220'	140'	100'	xx	xx	xx
WWP 30E-5.0	60,000	26,000	7,200	19	18,700	60,000	xx	120'	85'	65'	xx	xx
WWP 40E-5.0	80,000	22,000	6,000	23	15,800	80,000	xx	xx	180'	130'	100'	xx
WWP 40E-7.5	80,000	37,800	9,600	26.5	26,600	80,000	xx	xx	180'	130'	100'	xx
WWP 65E-7.5	130,000	39,000	10,000	25.5	27,600	130,000	xx	xx	xx	230'	180'	150'
WWP 75E-12.5	150,000	77,000	16,000	24.5	41,000	150,000	xx	xx	xx	xx	190'	150'

Dimensions* approximate (in.)								(lbs.)	
	Drum Diameter	C	M	N	O	L	P	Weight Net	Approximate Shipping
WWP 20E-3.0	8.62	5.66	13.5	7	35	26.62	22.1	830	830
WWP 30E-5.0	10	7.5	17.62	6.5	35	31	21.94	1,020	1,020
WWP 40E-5.0	10	9.72	23	6.66	37	37.5	21.96	1,415	1,415
WWP 40E-7.5	10	9.72	23	6.66	37	38.02	21.96	1,430	1,430
WWP 65E-7.5	14	9	23.75	7.25	40	38	30.28	2,140	2,140
WWP 75E-12.5	16	10	28.75	8	45	51.61	38	2,400	2,400

* All performance data and specifications set forth in the above table are guidelines. The referenced data and specifications were produced under controlled testing conditions and should be used as estimates only. Due to variability in individual operators, in weather, in towing conditions, and in various other factors, actual results may vary. In addition, for the purpose of installation, please verify all dimensions as the dimensions, specifications, data and other information contained in this brochure are subject to change at any time without notice.

TOWBOAT WINCHES: The Upright Winch



When deck space is limited, the Patterson Upright Winch is your solution.

- Manual locking dog for emergency use
- The Upright electric winches provide high-line speed and high-line pull
- This series of winches range from 20-ton through 90-ton capacities
- The Upright winch design has fewer parts creating lower maintenance
- Full rope guard to protect the wire rope from being fouled by the gearing
- Full gear shroud to protect gearing and help provide personal protection
- Units available in right- or left-handed models
- Motor sizes range from 3 HP to 12.5 HP, 208 Volt, 230/460 Volt, 3 phase with thermostat relays
- Galvanized winches for optimal corrosion protection available

TONNAGE **HP** **TYPE** **FINISH**
WWP 30 E - 5.4 - 10 - U - 230 - G - R
POWER DRUM WIDTH VOLTAGE HAND

Performance Data* approximate (lbs.)							Drum Capacities* approximate					
	Dog Holding Capacity	Brake Holding Capacity	Line Pull 1st Wrap	Line Speed 1st Wrap	Stall Pull 1st Wrap	Ult Shock Load	1/2"	5/8"	3/4"	7/8"	1"	1 1/8"
WWP 30E-5	60,000	46,800	10,800	16	30,300	60,000	xx	120'	85'	65'	xx	xx

Dimensions* approximate (in.)							(lbs.)	
	Drum Diameter	C	M	N	O	P	Weight Net	Approximate Shipping
WWP 30E-5	10	7.5	17.62	5.62	19	52.14	640	690

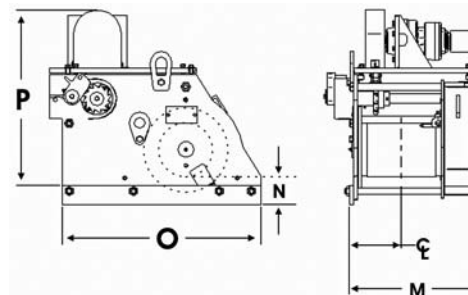
* All performance data and specifications set forth in the above table are guidelines. The referenced data and specifications were produced under controlled testing conditions and should be used as estimates only. Due to variability in individual operators, in weather, in towing conditions, and in various other factors, actual results may vary. In addition, for the purpose of installation, please verify all dimensions as the dimensions, specifications, data and other information contained in this brochure are subject to change at any time without notice.

TOWBOAT WINCHES: The Fully Hydraulic Winch



The Patterson Fully Hydraulic Winch is designed for durability and ease of operation. Our hydraulic winches are available from 20- to 90-ton capacities. Galvanized winches for optimal corrosion protection are also available.

- Optional saltwater-corrosion protection package includes stainless steel shafts, nuts and bolts, hot-dipped galvanized, and anti-seize on all threads or fasteners
- Disc brake is motor-mounted, fully enclosed, spring-applied and hydraulically released
- Manual locking dog for emergency use
- Vary take-up speed simply by varying input flow
- Heavy-duty roller chain and sprockets
- Heavy-duty roller bearings, high-strength phosphor bronze bearings
- Operates from vessel's existing hydraulic system
- High-efficiency planetary gear head
- Bolted keeper plate allows fast, easy shaft removal
- Rope and gear guards protect wire rope and enclose the gearing
- Brake, shuttle valves and controls available upon request



	Performance Data* approximate (lbs.)				Drum Capacities* approximate						
	Brake/Dog Holding Capacity	Line Speed 1st Wrap	Stall Pull 1st Wrap	Hydraulic Supply	1/2"	5/8"	3/4"	7/8"	1"	1 1/8"	1 1/4"
WWP 20H-6-L/R	40,000	21	15,000	16 GPM at 2,000 psi	220"	140"	100"	xx	xxx	xxx	xxx
WWP 30H-10-L/R	60,000	20	19,000	20 GPM at 2,000 psi	xx	120'	85'	65'	xx	xx	xx
WWP 40H-14-L/R	80,000	21	20,000	20 GPM at 2,250 psi	xx	xx	180'	130'	100'	xx	xx
WWP 50H-14-L/R	100,000	22	21,000	20 GPM at 2,250 psi	xx	xx	180'	130'	100'	xx	xx
WWP 65H-14-L/R	130,000	16	27,000	20 GPM at 2,250 psi	xx	xx	xx	230'	180'	150'	xxx
WWP 75H-10-L/R	150,000	12	37,000	20 GPM at 2,250 psi	xx	xx	xx	xx	190'	150'	125'

	Dimensions* approximate (in.)							(lbs.)	
	Drum Diameter	Drum Width	C/L	M	N	O	P	Net	Shipping
WWP 20H-6-L/R	8.625	6.875	5.8125	15	5.5	35	32.75	800	850
WWP 30H-10-L/R	10	10	8.8125	19	4.875	35	32.75	1,000	1,050
WWP 40H-14-L/R	10	14.375	9.1875	24.5	4	37	38.5	1,400	1,450
WWP 50H-14-L/R	10	14.375	9.1875	24.5	4	37	40	1,450	1,500
WWP 65H-14-L/R	14	14	10.75	25.75	5.5	40	48	2,125	2,175
WWP 75H-10-L/R	16	10	8	22.25	8.25	45	52	2,375	2,475

* All performance data and specifications set forth in the above table are guidelines. The referenced data and specifications were produced under controlled testing conditions and should be used as estimates only. Due to variability in individual operators, in weather, in towing conditions, and in various other factors, actual results may vary. In addition, for the purpose of installation, please verify all dimensions as the dimensions, specifications, data and other information contained in this brochure are subject to change at any time without notice.

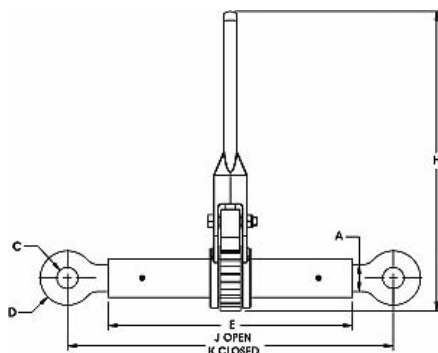
Used for rigging, tying down, bracing, mooring, securing and other heavy-duty applications in industry, Patterson's Ratchet Turnbuckles are available in a variety of standard sizes and configurations – including custom designs to match your precise specifications.

RATCHET TURNBUCKLES:

Here are just a few features that set Patterson Ratchet Turnbuckles apart from the others:

- Spring-activated pawl in handles
- Gravity pawl handles available as an option
- Barrel hex drives available for all models
- Hand-wheel and vise-type handles available on all models
- Barrels made from cold-drawn steel tubing not from welded pipe
- All turnbuckles are equipped with screw stops to decrease chances of accidental disassembly or loosening
- Turnbuckles are available galvanized for reduced maintenance in saltwater applications

STANDARD RATCHET TURNBUCKLES: Type D: Eye & Eye Turnbuckle



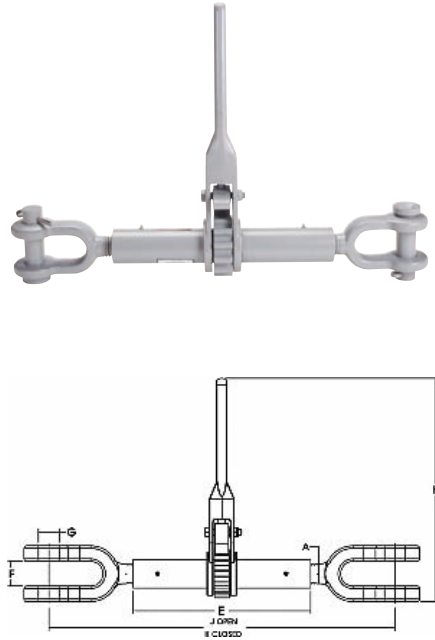
Specifications For Type D (Eye In Eye) Ratchet Turnbuckles

Model Number	A in.	E in.	D in.	H in.	C in.	J in.	K in.	Adj. in.	Safe Working Load ** (Tension)
3/4 X 12 Type D	0.75	12	1.88	11.5	1	26.5	16	10.5	4,600
1 X 12 Type D	1	12	2.38	11.5	1.25	26.5	16.5	10	9,000
1 X 18 Type D	1	18	2.38	11.5	1.25	38.5	22.5	16	9,000
1 1/8 X 12 Type D	1.25	12	2.75	11.5	1.38	26.5	16.75	9.75	10,000
1 1/8 X 18 Type D	1.13	18	2.75	11.5	1.38	38.5	22.75	15.75	10,000
1 1/4 X 12 Type D	1.25	12	3	20	1.5	26.5	17	9.5	14,600
1 1/4 X 18 Type D	1.25	18	3	20	1.5	38.5	23	15.5	14,600
1 3/8 X 12 Type D	1.38	12	3.5	20	1.56	26.75	17.5	9.25	17,000
1 3/8 X 18 Type D	1.38	18	3.5	20	1.56	38.75	23.5	15.25	17,000
1 3/8 X 24 Type D	1.38	24	3.5	20	1.56	50.75	29.5	21.25	17,000
1 1/2 X 12 Type D	1.5	12	3.63	20	1.75	26.75	17.75	9	21,400
1 1/2 X 18 Type D	1.5	18	3.63	20	1.75	38.75	23.75	15	21,400
1 1/2 X 24 Type D	1.5	24	3.63	20	1.75	50.75	29.75	21	21,400
1 3/4 X 18 Type D	1.75	18	4.5	20	1.69	38	23.5	14.5	25,000
1 3/4 X 24 Type D	1.75	24	4.5	20	1.69	50	29.5	20.5	25,000
1 3/4 X 30 Type D	1.75	30	4.5	20	1.69	62	35.5	26.5	25,000
2 X 18 Type D	2	18	5	26	2	40.5	26.5	14	30,000
2 X 24 Type D	2	24	5	26	2	52.5	32.5	20	30,000
2 X 30 Type D	2	30	5	26	2	64.5	38.5	26	30,000
2 1/2 X 18 Type D	2.5	18	6	26	3	40	27	13	60,000
2 1/2 X 24 Type D	2.5	24	6	26	3	52	33	19	60,000
2 1/2 X 30 Type D	2.5	30	6	26	3	64	39	25	60,000
2 3/4 X 24 Type D	2.75	24	6.5	26	3	52.5	34	18.5	76,000
2 3/4 X 30 Type D	2.75	30	6.5	26	3	64.5	40	24.5	76,000
3 X 18 Type D	3	18	6.5	26	3.25	40	28	12	100,000
3 X 24 Type D	3	24	6.5	26	3.25	46	34	12	100,000
4 X 24 Type D	4	24	9	26	3.5	44	36	8	200,000
4 X 30 Type D	4	30	9	26	3.5	50	42	8	200,000

**Safe Working Load, in tension, provides a safety factor of approximately five-to-one.

* All performance data and specifications set forth in the above table are guidelines. The referenced data and specifications were produced under controlled testing conditions and should be used as estimates only. Due to variability in individual operators, in weather, in towing conditions, and in various other factors, actual results may vary. In addition, for the purpose of installation, please verify all dimensions as the dimensions, specifications, data and other information contained in this brochure are subject to change at any time without notice.

STANDARD RATCHET TURNBUCKLES: Type J: Jaw & Jaw Turnbuckle

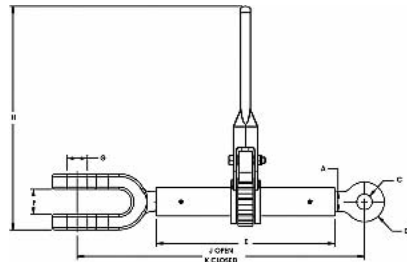


Specifications For Type J (Jaw & Jaw) Ratchet Turnbuckles									
Model Number	A in.	E in.	H in.	F in.	G in.	J in.	K in.	Adj.	Safe Wkg. Load** (Tension)
3/4 x 12 Type J	0.75	12	11.5	1	0.5	28.25	17.75	10.5	4600
1 X 12 Type J	1	12	11.5	1	1	29.5	19.5	10	9000
1 X 18 Type J	1	18	11.5	1	1	41.5	25.5	16	9000
1 1/8 X 12 Type J	1	12	11.5	1	1	30	20.25	9.75	10000
1 1/8 x 18 Type J	1	18	11.5	1	1	42	26.25	15.75	10000
1 1/4 X 12 Type J	1.25	12	20	1.75	1	31.5	22	9.5	14600
1 1/4 X 18 Type J	1.25	18	20	1.75	1	43.5	28	15.5	14600
1 3/8 X 12 Type J	1.5	12	20	1	1	33.25	24	9.25	17000
1 3/8 X 18 Type J	1.5	18	20	1	1	45.25	30	15.25	17000
1 3/8 X 24 Type J	1.5	24	20	1	1	57.25	36	21.25	17000
1 1/2 X 12 Type J	1.5	12	20	2	1.5	32	23	9	21400
1 1/2 X 18 Type J	1.5	18	20	2	1.5	44	29	15	21400
1 1/2 X 24 Type J	1.5	24	20	2	1.5	56	35	21	21400
1 3/4 X 18 Type J	1.75	18	20	2.5	1.75	44.75	30.25	14.5	25000
1 3/4 X 24 Type J	1.75	24	20	2.5	1.75	56.75	36.25	20.5	25000
1 3/4 X 30 Type J	1.75	30	20	2.5	1.75	68.75	42.25	26.5	25000
2 X 18 Type J	2	18	26	2.5	2	46	32	14	30000
2 X 24 Type J	2	24	26	2.5	2	58	38	20	30000
2 X 30 Type J	2	30	26	2.5	2	70	44	26	30000
2 1/2 X 18 Type J	2.5	18	26	3	2.5	48	35	13	60000
2 1/2 X 24 Type J	2.5	24	26	3	2.5	60	41	19	60000
2 1/2 X 30 Type J	2.5	30	26	3	2.5	72	47	25	60000
2 3/4 X 24 Type J	2.75	24	26	3.5	2.75	60.5	42	18.5	76000
2 3/4 X 30 Type J	2.75	30	26	3.5	2.75	72.5	48	24.5	76000
3 X 18 Type J	3	18	26	3.5	3	50	38	12	100000
3 X 24 Type J	3	24	26	3.5	3	56	44	12	100000
4 X 24 Type J	4	24	26	5.5	4	54	46	8	200000
4 X 30 Type J	4	30	26	5.5	4	60	52	8	200000

**Safe Working Load, in tension, provides a safety factor of approximately five-to-one.

* All performance data and specifications set forth in the above table are guidelines. The referenced data and specifications were produced under controlled testing conditions and should be used as estimates only. Due to variability in individual operators, in weather, in towing conditions, and in various other factors, actual results may vary. In addition, for the purpose of installation, please verify all dimensions as the dimensions, specifications, data and other information contained in this brochure are subject to change at any time without notice.

STANDARD RATCHET TURNBUCKLES: Type DJ: Eye & Jaw Turnbuckle

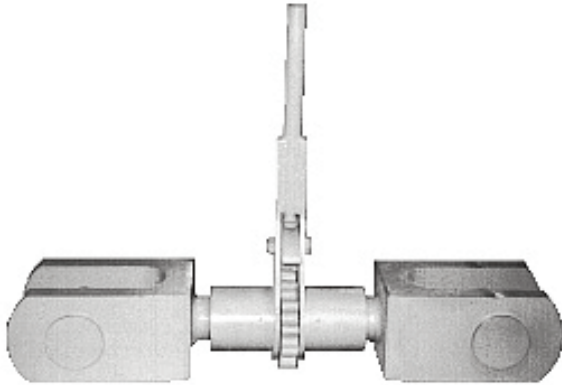


Specifications For Type DJ (Eye & Jaw) Ratchet Turnbuckles											
Model Number	A in.	E in.	D in.	H in.	C in.	F in.	G in.	J in.	K in.	Adj.	Safe Wkg. Load** (Tension)
3/4 X 12 Type DJ	0.75	12	1.88	11.5	1	0.94	0.69	27.38	16.88	10.5	4600
1 X 12 Type DJ	1	12	2.38	11.5	1.25	1.19	0.94	28	18	10	9000
1 X 18 Type DJ	1	18	2.38	11.5	1.25	1.19	0.94	40	24	16	9000
1 1/8 X 12 Type DJ	1.13	12	2.75	11.5	1.38	1	1.03	28.25	18.5	9.75	10000
1 1/8 X 18 Type DJ	1.13	18	2.75	11.5	1.38	1	1.03	40.25	24.5	15.75	10000
1 1/4 X 12 Type DJ	1.25	12	3	20	1.5	1.75	1.19	29	19.5	9.5	14600
1 1/4 X 18 Type DJ	1.25	18	3	20	1.5	1.75	1.19	41	25.5	15.5	14600
1 3/8 X 12 Type DJ	1.38	12	3.5	20	1.56	1.13	1.13	30	20.75	9.25	17000
1 3/8 X 18 Type DJ	1.38	18	3.5	20	1.56	1.13	1.13	42	26.75	15.25	17000
1 3/8 X 24 Type DJ	1.38	24	3.5	20	1.56	1.13	1.13	54	32.75	21.25	17000
1 1/2 X 12 Type DJ	1.5	12	3.63	20	1.75	2	1.44	29.38	20.38	9	21400
1 1/2 X 18 Type DJ	1.5	18	3.63	20	1.75	2	1.44	41.38	26.38	15	21400
1 1/2 X 24 Type DJ	1.5	24	3.63	20	1.75	2	1.44	53.38	32.38	21	21400
1 3/4 X 18 Type DJ	1.75	18	3.25	20	1.69	2.38	1.69	41.38	26.88	14.5	25000
1 3/4 X 24 Type DJ	1.75	24	3.25	20	1.69	2.38	1.69	53.38	32.88	20.5	25000
1 3/4 X 30 Type DJ	1.75	30	3.25	20	1.69	2.38	1.69	65.38	38.88	26.5	25000
2 X 18 Type DJ	2	18	5	26	2	2.5	2.06	43.25	29.25	14	30000
2 X 24 Type DJ	2	24	5	26	2	2.5	2.06	55.25	35.25	20	30000
2 X 30 Type DJ	2	30	5	26	2	2.5	2.06	67.25	41.25	26	30000
2 1/2 X 18 Type DJ	2.5	18	6	26	3	2.88	2.31	44	31	13	60000
2 1/2 X 24 Type DJ	2.5	24	6	26	3	2.88	2.31	56	37	19	60000
2 1/2 X 30 Type DJ	2.5	30	6	26	3	2.88	2.31	68	43	25	60000
2 3/4 X 24 Type DJ	2.75	24	6.5	26	3	3.5	2.81	56.5	38	18.5	76000
2 3/4 X 30 Type DJ	2.75	30	6.5	26	3	3.5	2.81	68.5	44	24.5	76000
3 X 18 Type DJ	3	18	6.5	26	3.25	3.5	3.06	45	33	12	100000
3 X 24 Type DJ	3	24	6.5	26	3.25	3.5	3.06	51	39	12	100000
4 X 24 Type DJ	4	24	9	26	3.5	5.5	4.06	49	41	8	200000
4 X 30 Type DJ	4	30	9	26	3.5	5.5	4.06	55	47	8	200000

**Safe Working Load, in tension, provides a safety factor of approximately five-to-one.

* All performance data and specifications set forth in the above table are guidelines. The referenced data and specifications were produced under controlled testing conditions and should be used as estimates only. Due to variability in individual operators, in weather, in towing conditions, and in various other factors, actual results may vary. In addition, for the purpose of installation, please verify all dimensions as the dimensions, specifications, data and other information contained in this brochure are subject to change at any time without notice.

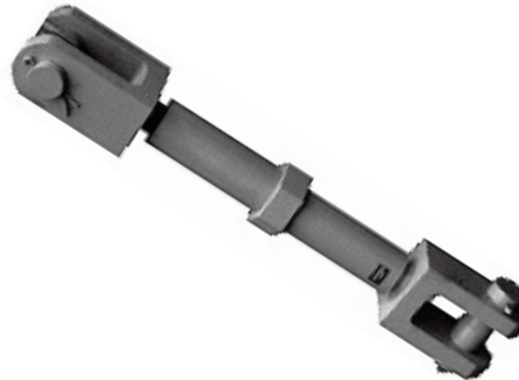
CUSTOM RATCHET TURNBUCKLES



**Four-Inch Shank Diameter,
Jaw-and-Jaw Turnbuckle
with 200,000 lbs.
Working Load Limit**

*(Load Limit is based on approximate
5:1 safety factor)*

These turnbuckles secure large vessels in their moorings during the loading and unloading of cargo. Deck hands can easily release the lashings and allow the trip to begin without difficulty.



**Four-Inch Shank Diameter
with 200,000 lbs.
Working Load Limit (200,000 lbs.)
and a Six-Foot Barrel.**

*(Load Limit is based on approximate
5:1 safety factor)*

These turnbuckles secure a fleet of 30-story Gantry cranes at a Southeast Asia dock. Even under foul weather conditions, these turnbuckles help provide continuous operations.



**Three-Inch Shank Diameter,
Jaw-and-Eye Turnbuckle
with 100,000 lbs. Working Load
Limit and a Nine-Foot Barrel**

*(Load Limit is based on approximate
5:1 safety factor)*

These turnbuckles bind 23-story Gantry cranes to docks in New York City. Designed to be out of the way when not in use, they speed-up the loading and unloading cycles due to the ease of tensioning.

INDUSTRY-SPECIFIC RATCHET TURNBUCKLES

Patterson Products in Mining

Mining is one of the most significant U.S. industries, making your organization – *and your workers* – a pivotal part of the future of energy in the U.S. With such a large responsibility ahead, you need every part of your mining process working as safely, easily and productively as possible.

That's why you need Patterson Ratchet Turnbuckles to support your workforce. Used for rigging, tying-down, bracing, mooring, securing and other heavy-duty applications in mining, Patterson Ratchet Turnbuckles are available in a variety of standard sizes and configurations – and are also available as custom designs to match your precise requirements.

2" General-Purpose Ratchet Jack

The most versatile of all push-pull ratchets, the General Purpose Ratchet Jack is widely used in a variety of mining applications.



Model Numbers:	2 x 18 Type D 2020	2 x 24 Type D 2000	2 x 30 Type D 7036-D
Performance Data:			
Safe Working Load**	25,000	25,000	25,000
Take-up/Adjustment	14"	20"	26"
Dimensions/Weights			
Barrel Length	18	24	30
Eye-to-eye Lengths:			
Closed	24"	30"	36"
Open	38"	50"	62"
Weights	65 lbs.	70 lbs.	80 lbs.

****Ultimate load is 5 times working load limit.**

* All performance data and specifications set forth in the above table are guidelines. The referenced data and specifications were produced under controlled testing conditions and should be used as estimates only. Due to variability in individual operators, in weather, in towing conditions, and in various other factors, actual results may vary. In addition, for the purpose of installation, please verify all dimensions as the dimensions, specifications, data and other information contained in this brochure are subject to change at any time without notice.

INDUSTRY-SPECIFIC RATCHET TURNBUCKLES

Tensor Screw and Type Belt Jack

The most reliable belt tensioning jack in the mines, this patented design features telescoping tubes, screw-type action, and chains with grab hooks on both ends. Simple and fast to operate, using ratchet wrench and power wrench, and can be tightened to 8,000 lbs.



Model Numbers:	T-33	T-200
Performance Data:		
Safe Working Load**	7,300	7,200
Chain Size (in.)	1/2	1/2
Standard Adjustment (in.)	13	13
Chain Length (in.)	84 and 24	12 and 12
Approx Weight With 8" Adjustment (lbs.)	44	30

****Safe Working Load, in tension, provides a safe factor of approximately three-to-one. All performance data and specifications set forth are guidelines.**

2" General-Purpose Push-Pull Ratchet

The Push-Pull ratchet is designed for many mining applications. Its unique end fitting system design makes this ratchet the most versatile in the market. Used for pulling structural members together, this ratchet is ready for any mining job. Use the ratchet with pipe and chain for added versatility!



Part Number	7300
Capacity (tons)	10
Travel (in.)	18
Screw Diameter (in.)	2
Length (in.)	24
Weight (lbs.)	75

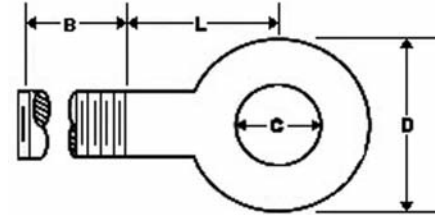
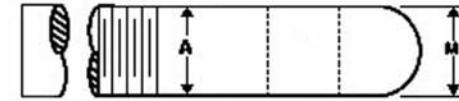
* All performance data and specifications set forth in the above table are guidelines. The referenced data and specifications were produced under controlled testing conditions and should be used as estimates only. Due to variability in individual operators, in weather, in towing conditions, and in various other factors, actual results may vary. In addition, for the purpose of installation, please verify all dimensions as the dimensions, specifications, data and other information contained in this brochure are subject to change at any time without notice.

PRODUCT ACCESSORIES

Patterson handles, end fittings and barrels are available as product accessories to the Ratchet Turnbuckle product line. Our double-acting handles have a spring-loaded pawl, which helps to provide constant engagement of the pawl in the ratchet wheel, regardless of the position of the ratchet turnbuckle. This makes the double-acting handle easier, safer and faster to use. Standard hand-wheels, vise-type and hex-drives are available upon request.

Our industrial-use barrel is made from cold-drawn tubing, making it stronger than a comparable pipe barrel. Barrels can be galvanized and fitted with grease fittings to reduce maintenance even in the harshest saltwater applications.

Threaded Eyebolts



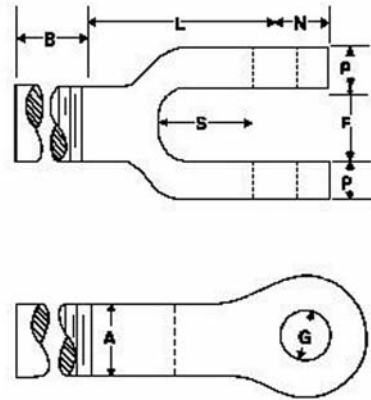
Dimensions (in.)						(lbs.)
A Shank Diameter	B Shank Length	D Outside Eye Diameter	C Maximum Drilled Hole Diameter	L 1st Thread to Hole Center	M Eye Thickness	Safe Working Load** (Tension)
0.75	12.00	1.88	0.75	2.00	0.75	4,600
0.88	12.00	2.13	1.00	2.25	0.88	6,400
1.00	12.00	2.38	1.00	2.25	1.00	9,000
1.13	12.00	2.75	1.00	2.00	1.13	10,000
1.25	18.00	3.00	1.50	2.50	1.25	14,600
1.38	24.00	3.50	1.56	2.75	1.25	19,600
1.50	24.00	3.63	1.75	2.88	1.50	21,400
1.75	24.00	3.25	1.69	2.75	1.50	27,000
2.00	18.00	3.50	1.31	3.00	1.88	30,000
2.00	18.00	4.00	1.56	3.50	1.50	30,000
2.00	24.00	5.00	2.00	4.25	2.00	37,000
2.50	24.00	6.00	2.50	4.50	2.50	60,000
2.75	24.00	6.50	2.75	5.00	2.75	77,000
3.00	6.00	6.50	3.00	5.00	3.00	100,000
4.00	7.00	10.75	3.50	6.88	4.00	200,000

**Safe Working Load, in tension, provides a safety factor of approximately five-to-one.

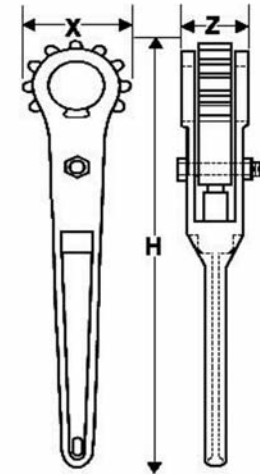
* All performance data and specifications set forth in the above table are guidelines. The referenced data and specifications were produced under controlled testing conditions and should be used as estimates only. Due to variability in individual operators, in weather, in towing conditions, and in various other factors, actual results may vary. In addition, for the purpose of installation, please verify all dimensions as the dimensions, specifications, data and other information contained in this brochure are subject to change at any time without notice.

PRODUCT ACCESSORIES

Threaded Jaws



Ratchet Handles



Dimensions (in.)								(lbs.)
A	B	F	S	G	N	P	L	Safe Working Load** (Tension)
Shank Diameter	Shank Length	Throat Opening	Throat Depth	Hole Diameter	Jaw End to Hole C/L	Cheek Thickness	1st Thread to Hole C/L	
0.75	10.00	0.94	1.50	0.69	1.00	0.50	2.75	4,600
1.00	14.00	1.19	2.06	0.94	1.25	0.75	3.75	9,000
1.13	18.00	1.25	2.06	1.03	1.13	0.50	3.75	10,000
1.25	14.00	1.75	2.44	1.19	1.50	0.88	5.00	14,600
1.38	16.00	1.13	3.00	1.13	1.25	0.75	6.00	17,000
1.50	15.00	2.31	2.81	1.44	1.81	1.09	5.50	21,400
1.75	15.00	2.38	2.88	1.72	2.00	1.14	6.33	27,000
2.00	16.00	2.50	3.68	2.09	2.60	1.55	7.00	37,000
2.50	18.00	2.88	4.44	2.38	3.50	1.50	9.50	60,000
2.75	18.00	3.50	4.19	2.88	4.00	1.75	9.40	77,000
3.00	8.00	3.50	5.50	3.06	3.38	1.75	10.00	100,000
4.00	8.00	5.50	5.50	4.06	4.38	2.00	11.50	200,000

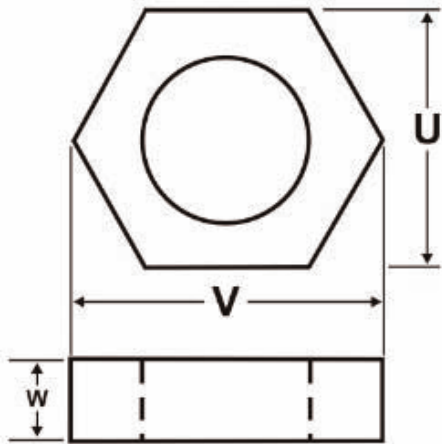
**Safe Working Load, in tension, provides a safety factor of approximately five-to-one.

Model Number	Corresponding Barrel Diameter in.	X in.	H in.	Z in.
SR 1.0	1.75	3.25	13.25	1.88
SR 1.375	2.38	4.38	22.00	3.00
SR 1.75	2.88	5.00	22.25	3.00
SR 2.0	3.50	5.63	27.50	2.75
SR 2.5	3.75	5.75	27.56	2.75
SR 3.0	4.50	6.75	29.25	2.75
SR 4.0	6.00	9.13	33.00	2.75

* All performance data and specifications set forth in the above table are guidelines. The referenced data and specifications were produced under controlled testing conditions and should be used as estimates only. Due to variability in individual operators, in weather, in towing conditions, and in various other factors, actual results may vary. In addition, for the purpose of installation, please verify all dimensions as the dimensions, specifications, data and other information contained in this brochure are subject to change at any time without notice.

PRODUCT ACCESSORIES

Hex Drives



Corresponding Barrel Diameter in.	U in.	V in.	W in.
1.75	2.38	2.74	1.00
2.38	3.13	3.61	1.50
2.88	3.88	4.47	1.75
3.50	4.38	5.00	2.00
3.75	4.63	5.34	2.00
4.50	5.50	6.38	3.00
6.00	6.88	8.00	3.00

Ratchet Barrel

Safe Working Load** Tension (lbs.)	Ratchet Screw Diameter (in.)	Barrel Diameter (in.)	Standard Barrel Lengths (in.)	Range of Adj. (in.)
4,600	0.75	1.75	6 to 24	4 to 22
9,000	1.00	1.75	6 to 24	4 to 22
10,000	1.13	1.75	6 to 24	4 to 22
14,600	1.25	2.38	12 to 36	9 to 33
17,000	1.38	2.38	12 to 36	9 to 33
21,400	1.50	2.88	12 to 48	8 to 44
25,000	1.75	2.88	12 to 48	8 to 44
25,000	2.00	2.88	12 to 48	8 to 44
30,000	2.00	3.50	12 to 36	7 to 31
60,000	2.50	3.75	12 to 36	7 to 31
77,000	2.75	4.50	8 to 36	3 to 30
100,000	3.00	4.50	8 to 36	2 to 12
200,000	4.00	6.00	10 to 36	2 to 12

****Safe Working Load, in tension, provides a safety factor of approximately five-to-one.**

* All performance data and specifications set forth in the above table are guidelines. The referenced data and specifications were produced under controlled testing conditions and should be used as estimates only. Due to variability in individual operators, in weather, in towing conditions, and in various other factors, actual results may vary. In addition, for the purpose of installation, please verify all dimensions as the dimensions, specifications, data and other information contained in this brochure are subject to change at any time without notice.

Patterson's patented Tensors are an ideal industrial tool that enables you to quickly, easily and safely secure loads on ships, rail cars, or any other application that requires tensioning or pulling. Available in a variety of styles, our Tensors boast an innovative design comprising a screw-type action with eccentric loading. By turning the drive head, the large outer barrel telescopes over the inner barrel and pulls the anchoring points together.

TENSORS:

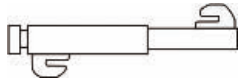
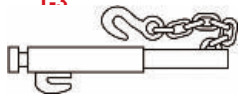
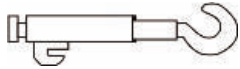
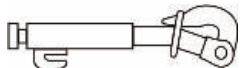

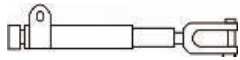
Here are just a few reasons why you should be using Patterson Tensors:

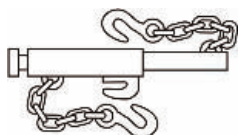
- All working parts within the Tensors are enclosed for long-term durability.
- Tensors leave the factory fully lubricated and ready to go when they arrive at your facility.
- Tensors are available in a wide variety of models. Choose the right Tensor for the job at hand, taking into consideration the design style, chain size and safe working load needed.
- Tensors can be used in a variety of industries and applications, including mining, shipping, railroading...and even guy-wire tensioning for portable radar antennas.

The result? A **safer, easier, faster** way for your work crews to secure a load.



TENSORS: Tensor Models

Models	Safe Working Load**	Chain Size (in.)	Standard Adjustment (in.)	Chain Length (in.)	Approx. Weight with 8" Adjustment (lbs.)
T-2 	5,400	3/8	6 thru 14	N/A	14
	9,000	1/2	6 thru 14	N/A	16
	15,000	5/8	6 thru 14	N/A	22
	20,000	3/4	6 thru 14	N/A	40
T-3 	7,300	1/2	6 thru 14	N/A	20
	9,300	5/8	6 thru 14	N/A	27
T-5 	5,400	3/8	6 thru 14	N/A	19
	9,000	1/2	6 thru 14	N/A	21
	15,000	5/8	6 thru 14	N/A	25
	20,000	3/4	6 thru 14	N/A	43
T-7 	5,400	3/8	6 thru 14	N/A	19
	9,000	1/2	6 thru 14	N/A	21
	15,000	5/8	6 thru 14	N/A	25
	20,000	3/4	6 thru 14	N/A	43
T-8 	5,400	3/8	6 thru 14	N/A	18
	9,000	1/2	6 thru 14	N/A	20
	15,000	5/8	6 thru 14	N/A	25
	20,000	3/4	6 thru 14	N/A	43
T-10 	5,400	3/8	6 thru 14	N/A	34
	9,000	1/2	6 thru 14	N/A	44
	15,000	5/8	6 thru 14	N/A	58
	20,000	3/4	6 thru 14	N/A	70
T-33	7,300	1/2	13	84 and 24	44
T-200	7,200	1/2	13	12 and 12	30
T-33	9,300	5/8	13	84 and 24	70
T-200	9,300	5/8	13	12 and 12	41



****Safe Working Load, in tension, provides a safety factor of approximately three-to-one.
All performance data and specifications set forth are guidelines.**

* All performance data and specifications set forth in the above table are guidelines. The referenced data and specifications were produced under controlled testing conditions and should be used as estimates only. Due to variability in individual operators, in weather, in towing conditions, and in various other factors, actual results may vary. In addition, for the purpose of installation, please verify all dimensions as the dimensions, specifications, data and other information contained in this brochure are subject to change at any time without notice.

SERVICES: **Welding, Machining & Fabricating**

A core part of our operations is a fully equipped machining, welding and fabricating shop – along with a highly experienced team of operators – that can handle a wide range of projects. We have three CNC mills, four CNC lathes (including two with digital readouts), three threading and screw cutters, four gear cutters, and three drill presses.

In addition, we have flame-cutting and painting and cleaning capabilities. Our 1000-square foot assembly area also contains a 2-ton crane. We have a DC Morrison Keyseater, an Amada HFA 250 saw with bar feed, tumbler (vibratory), and a 5-ton capacity crane.

For more detailed information and specific machine shop applications, visit www.pattersonmfg.com.

PRODUCT WARRANTY AND RETURN POLICY

Limited Warranty

Subject to its standard Terms and Conditions, W.W. Patterson Company ("Seller") warrants that its winches, under normal use and service, will be free from defects in materials and/or workmanship for a period of 180 days from the date the winch is shipped to the end-user and warrants that its jacks, turnbuckles, tensors and any other product manufactured by or on behalf of Seller, under normal use and service, will be free from defects in materials and/or workmanship for a period of 90 days from the date the Product is shipped to the end-user. As used herein, "Products" shall collectively mean the winches, jacks, turnbuckles, tensors and other products manufactured by or on behalf of Seller.

This warranty is limited to the repair, or at Seller's sole option, the replacement of any Product(s) or component(s) found to be defective. This limited warranty (a) does not cover damage caused by improper use, storage, handling or normal wear and tear, including but not limited to any effects of weathering, misuse, alteration or neglect, (b) does not apply to defects arising from the buyer's faulty maintenance or unauthorized modification or alteration of the Product, (c) does not cover damage from handling in shipment and (d) does not cover damage from accident, disaster or event of force majeure. **[Any equipment or components of the Products not manufactured by or on behalf of Seller are sold only under such warranty as the manufacturer thereof provides to Seller and which Seller is able to enforce, but such items are not warranted by Seller in any way.]**

To make claims under this limited warranty, the Product(s) must, at Seller's sole option, be (1) returned for examination, freight prepaid, to W.W. Patterson Company, 870 Riversea Road, Pittsburgh, PA 15233, or (2) inspected by an authorized agent, employee or representative of Seller. This limited warranty is effective, provided, the buyer notifies Seller of the alleged defect in writing immediately after such defect becomes known to the buyer, and the Product has not been modified, altered or changed by any person or entity (other than an authorized agent, employee or representative of Seller) without Seller's prior written approval. Notwithstanding the foregoing, Seller reserves the right to determine, in its sole discretion, if the Product is defective.

Authorization, shipping instructions and other conditions related to the return of any Product, including but not limited to a Return Material Authorization ("RMA") number, must be obtained from Seller before returning any Products to Seller, and credit will not be allowed for Products returned without meeting such conditions of Seller. RMA numbers can be obtained from Seller by contacting either rma@pattersonmfg.com or calling 1-800-322-2018. When requesting an RMA number, provide the order number, a description of the Product(s) to be returned and the reason for return. **SELLER WILL ONLY ACCEPT PRODUCTS FOR RETURN THAT HAVE AN RMA NUMBER.** To avoid delays in processing a return, the RMA number must be clearly printed on the return label. All Products shall be returned to Seller at the following address: RMA Department, Patterson, 845 Pennsylvania Avenue, Pittsburgh, PA 15233. All Products returned to Seller must be shipped freight prepaid and received by Seller within thirty (30) days (for Products returned from within the United States) or forty-five (45) days (for Products returned internationally) of the RMA number issuance date. Products should be returned via a trackable shipping method as Seller is not responsible for any Products lost in shipment during the return process.

Upon Seller's receipt of Products returned in accordance with Seller's return instructions, Seller will diligently process the return. Products that are for immediate replacement will be sent and invoiced to the buyer at the return address provided by the buyer. Upon processing a return of a Product, Seller will either bill or credit the buyer's invoice dependent on the outcome of the return. Seller reserves the right to invoice the buyer if any of the following occur during the return process: (1) the Product is not returned within thirty (30) days (for Products returned from within the United States) or forty-five (45) days (for Products returned internationally) of the RMA number issuance date; (2) the Product is damaged due to the negligence and/or improper use by the buyer or any third party; or (3) the Product is returned outside the limited warranty period. Seller further reserves the right to charge a restocking fee of at least 25% of the purchase price for all returned Products.

EXCEPT FOR WARRANTY OF TITLE AND THE WARRANTIES SET FORTH HEREIN, AND AS FURTHER DESCRIBED IN SELLER'S TERMS AND CONDITIONS WHICH ARE HEREBY INCORPORATED BY REFERENCE, SELLER MAKES NO OTHER REPRESENTATIONS OR WARRANTIES, EXPRESS OR IMPLIED, WRITTEN OR ORAL, WITH RESPECT TO THE PERFORMANCE OF ANY SERVICE, OR THE SHIPMENT, DELIVERY, PERFORMANCE OR CONDITION OF ANY PRODUCTS OR COMPONENT THEREOF, WHETHER OR NOT MANUFACTURED, DESIGNED OR DEVELOPED, IN WHOLE OR IN PART, BY SELLER. SELLER SPECIFICALLY DISCLAIMS, AND BUYER, ON BEHALF OF ITSELF AND ITS DIRECTORS, OFFICERS, EMPLOYEES, AGENTS,

REPRESENTATIVES, SUCCESSORS AND ASSIGNS AND ALL OTHER PURCHASERS OR USERS OF THE PRODUCTS, HEREBY WAIVES, ANY WARRANTIES OF MERCHANTABILITY OR FITNESS FOR A PARTICULAR PURPOSE AND ALL WARRANTIES ARISING FROM COURSE OF DEALING OR USAGE OF TRADE, RELATING TO THIS CONTRACT, INVOICE, OR THE PRODUCTS PURCHASED PURSUANT HERETO.

NOTWITHSTANDING ANY PROVISION CONTAINED HEREIN, SELLER SHALL NOT BE LIABLE IN CONTRACT, IN TORT (INCLUDING BUT NOT LIMITED TO NEGLIGENCE OR STRICT LIABILITY), INDEMNIFICATION OR OTHERWISE FOR DAMAGE TO OR LOSS OR USE OF PROPERTY OR EQUIPMENT, INJURY TO PERSONS (INCLUDING DEATH) CAUSED BY, WITHOUT LIMITATION, MISUSE, UNSAFE OPERATION, MODIFICATION, ALTERATION OR CHANGE OF THE PRODUCTS, LOSS OF TIME, LOSS OF PROFITS OR REVENUE, LOSS OF GOODWILL, INTERRUPTION OF BUSINESS, COST OF CAPITAL, COST OF TEMPORARY PROPERTY OR EQUIPMENT (INCLUDING ADDITIONAL EXPENSES INCURRED IN USING EXISTING FACILITIES), OR FOR ANY SPECIAL, INDIRECT, INCIDENTAL, OR CONSEQUENTIAL DAMAGES, REGARDLESS OF WHETHER SELLER (A) HAS BEEN INFORMED OF THE POSSIBILITY OF SUCH DAMAGES OR (B) IS NEGLIGENT. THIS WARRANTY GIVES BUYER SPECIFIC LEGAL RIGHTS, AND BUYER MAY ALSO HAVE OTHER RIGHTS WHICH VARY FROM STATE TO STATE. SOME STATES DO NOT ALLOW THE EXCLUSION OR LIMITATION OF INCIDENTAL OR CONSEQUENTIAL DAMAGES, SO THE ABOVE LIMITATION OR EXCLUSION MAY NOT APPLY TO BUYER.

Returned Goods Policy

TERMS AND CONDITIONS

- ENTIRE CONTRACT:** The terms and conditions set forth herein shall constitute the sole and exclusive conditions of sale regarding all equipment, materials, labor and services (hereinafter collectively referred to as "Products") sold by W. W. Patterson Company ("Seller") to Buyer and the entire and complete contract of the parties with respect to the Products. Said Terms and Conditions shall not, in any way, be modified, changed, limited, controlled, or restricted by any oral statements, by the provisions on any of Buyer's forms, or by letters or papers which are inconsistent herewith. No waiver, consent, modification, amendment or change of these Terms and Conditions shall be binding unless in writing and signed by Seller and Buyer. Acceptance of Buyer's order by Seller is expressly made conditional upon Buyer's assent to these Terms and Conditions, whether such assent is by written acknowledgment or by conduct of Buyer that recognizes the existence of a contract, and no terms, conditions, promises, understandings, representations or warranties, oral or written, other than those set forth herein shall be binding on Seller. **THESE TERMS AND CONDITIONS CONSTITUTE NOTIFICATION OF SELLER'S OBJECTION TO AND REJECTION OF ANY OTHER CONDITIONS OF SALE, WHETHER CONTAINED IN BUYER'S PURCHASE ORDER, BID DOCUMENTS OR IN ANY OTHER WRITING, THAT ARE DIFFERENT FROM, INCONSISTENT WITH OR ADDITIONAL TO THE TERMS AND CONDITIONS SET FORTH HEREIN. IF THESE TERMS AND CONDITIONS DIFFER FROM THE TERMS OF BUYER'S OFFER, THIS DOCUMENT SHALL BE CONSTRUED AS A COUNTER OFFER AND SHALL NOT BE EFFECTIVE AS AN ACCEPTANCE OF BUYER'S DOCUMENT. ANY ATTEMPTED ACCEPTANCE BY BUYER THAT CONTAINS TERMS INCONSISTENT WITH OR IN ADDITION TO THESE TERMS AND CONDITIONS IS NOT BINDING UNLESS SPECIFICALLY AGREED TO BY SELLER IN WRITING. SELLER'S FAILURE TO OBJECT TO TERMS CONTAINED IN ANY SUBSEQUENT COMMUNICATION FROM BUYER WILL NOT BE A WAIVER OR MODIFICATION OF THE TERMS AND CONDITIONS SET FORTH HEREIN.**
- PAYMENT:** Unless otherwise agreed to in writing by Seller, payment by Buyer for each shipment of Products by Seller shall be made, within thirty (30) days of the shipping date of the Products, in U.S. Dollars at the price quoted on the face hereof, or if none is quoted hereon, then at the price in effect on the day on which shipment is made by or on behalf of Seller, without deductions of any kind for taxes, exchange, permits or licensing fees or any charges, set-off or counterclaims whatsoever. All prices for the Products are subject to adjustment on account of specifica-

PRODUCT WARRANTY AND RETURN POLICY

tions, quantities, raw materials, cost of production, shipment arrangements or other terms or conditions which are not part of Seller's original price quotation. A service charge equal to one percent (1%) per month, an effective annual interest rate of twelve percent (12%), shall be added to the net amount of each invoice not paid within thirty (30) days of the shipping date of the Products. Buyer shall pay all costs and expenses, including without limitation reasonable attorneys' fees, disbursements and court costs incurred by Seller in collecting past-due payments. If, in Seller's judgment, the credit of Buyer becomes impaired or Seller deems itself insecure, Seller may, at its sole option, suspend production, shipment or delivery and request that Buyer provide it with reasonable guarantees and/or security, including but not limited to full or partial payment from Buyer in advance. The failure or refusal of Buyer to provide such guarantees and/or security within ten (10) days after Seller's request therefor shall constitute a repudiation of the entire contract and Seller, in addition to all other remedies legally available to it, may accelerate and declare immediately due all of Buyer's accounts with Seller.

3. **SHIPMENT:** If shipping instructions are not given when Buyer's order is placed, said instructions must be given by Buyer within ten (10) days after receipt of the order. Seller will make shipments as nearly as feasible in accordance with such shipping instructions as shipping facilities and Seller's schedule and manufacturing facilities permit. Seller reserves the right to ship any Products covered by any order at any time after receipt of shipping instructions from Buyer and to invoice Buyer for such Products at any time on or after shipment.
4. **TAXES/COSTS:** To the extent legally permissible, all present and future excise, transfer, border, personal property, sales and other taxes imposed by any federal, state, foreign or local authority which Seller or its agents, contractors or suppliers may be required to pay or collect, upon or with reference to the sale, purchase, transportation, delivery, storage, installation, use, consumption or ownership of the Products, including taxes upon or measured by the receipts therefrom (except net income and equity franchise taxes), shall be for the account of Buyer and Buyer agrees to pay or reimburse any such charges which Seller or its agents, contractors or suppliers are required to pay. If Buyer claims any exemption, Buyer must provide a valid signed certificate or letter of exemption for each respective jurisdiction. Additionally, Buyer shall be responsible for and agrees to pay or reimburse Seller for all trade tariffs, import/export permits, charges, customs duties, stamp duties, registration fees, clearances and other permits arising from or connected with the shipment of the Products.
5. **TITLE:** Subject to Seller's right to stop delivery of the Product in transit, title to Products priced at Seller's shipping point shall pass to Buyer upon delivery at such shipping point. Title to Products priced at destination shall pass to Buyer upon delivery at the destination specified, and any charges at destination for spotting, switching, handling, storage, and other accessorial services, and demurrage, shall be for Buyer's account.
6. **RISK OF LOSS:** Notwithstanding any specified shipment terms or any other provision in these Terms and Conditions or in any other writing, the risk of loss for any damage to or destruction of the Products, or any component thereof, sold by Seller to Buyer shall pass to Buyer, and Buyer shall bear such risk, subject to the terms noted below, immediately upon delivery of the Products to the carrier at the designated shipping point. Buyer shall be solely responsible for obtaining and maintaining in force insurance to protect Buyer against such risk of loss.
7. **CHECKING PRODUCTS/CLAIMS:** Buyer agrees to immediately check Products against shipping papers upon unloading at destination. Claims, including but not limited to shortage claims, must be made within ten (10) days following receipt of the Products by Buyer and Seller must be given a reasonable opportunity to investigate. Any defect of the Products which would have been observable on reasonable inspection by Buyer and which is not objected to in writing within ten (10) days after receipt of such Products by Buyer (which the parties agree is a reasonable period of time for such purpose), is hereby waived, and Buyer shall have no right to reject or revoke its acceptance based upon any such defect, nor shall any such defect give rise to any claim against Seller. In case of loss of or damages to Products in transit, Buyer shall immediately notify the carrier or its agent in writing of such loss or damage and shall do all things necessary to assert and prosecute a claim against the carrier for such loss or damage and shall cooperate fully with Seller in any such claim Seller may, in its sole discretion, assert against a carrier for such loss or damage. Authorization, shipping instructions and other conditions related to the return of any Products, including but not limited to a Return Material Authorization ("RMA") number, must be obtained by Buyer from Seller before returning any Products to Seller, and credit will not be allowed for Products returned without meeting such conditions of Seller. Seller reserves the right to charge Buyer a restocking fee of at least 25% of the purchase price for all returned Products.
8. **LIMITED WARRANTY/DISCLAIMERS:** Seller warrants that its winches, under normal use and service, will be free from defects in materials and/or workmanship for a period of 180 days from the date the Product is shipped to the end-user and warrants that its jacks, turnbuckles, tensors and any other product manufactured by or on behalf of

Seller under normal use and service, will be free from defects in materials and/or workmanship for a period of 90 days from the date the Product is shipped to the end-user. Seller further warrants that all Products sold to Buyer pursuant to this contract will be conveyed free and clear of all liens, claims, charges and encumbrances, except for security interests retained by and/or granted to Seller. **EXCEPT FOR THE WARRANTIES SET FORTH HEREIN, AND AS FURTHER DESCRIBED IN SELLER'S LIMITED WARRANTY WHICH IS HEREBY INCORPORATED BY REFERENCE INTO THESE TERMS AND CONDITIONS, SELLER MAKES NO OTHER REPRESENTATIONS OR WARRANTIES, EXPRESS OR IMPLIED, WRITTEN OR ORAL, WITH RESPECT TO THE PERFORMANCE OF ANY SERVICE, OR THE SHIPMENT, DELIVERY, PERFORMANCE OR CONDITION OF ANY PRODUCTS OR COMPONENT THEREOF, WHETHER OR NOT MANUFACTURED, DESIGNED OR DEVELOPED, IN WHOLE OR IN PART, BY SELLER. SELLER SPECIFICALLY DISCLAIMS, AND BUYER, ON BEHALF OF ITSELF AND ITS DIRECTORS, OFFICERS, EMPLOYEES, AGENTS, REPRESENTATIVES, SUCCESSORS AND ASSIGNS AND ALL OTHER PURCHASERS OR USERS OF THE PRODUCTS, HEREBY WAIVES, ANY WARRANTIES OF MERCHANTABILITY OR FITNESS FOR A PARTICULAR PURPOSE AND ALL WARRANTIES ARISING FROM COURSE OF DEALING OR USAGE OF TRADE, RELATING TO THIS CONTRACT, INVOICE, OR THE PRODUCTS PURCHASED PURSUANT HERETO. [Notwithstanding the foregoing, any equipment or components of the Products not manufactured by or on behalf of Seller are sold only under such warranty as the manufacturer thereof provides to Seller and which Seller is able to enforce, but such items are not warranted by Seller in any way.]** Buyer warrants and agrees that in entering into this contract it did not rely upon any representation or warranty of Seller or any director, officer, employer, agent or representative of Seller not set forth herein or incorporated by reference. The warranty obligations of Seller are conditioned upon the installation and use of the Products in complete accordance with Seller's instructions and requirements, which are hereby incorporated by reference into the contract between Seller and Buyer. **SELLER SHALL NOT BE RESPONSIBLE FOR ANY DEFECT OR DEFICIENCY IN, OR ANY DAMAGE WHATSOEVER CAUSED BY, ANY PRODUCTS WHICH HAVE BEEN MODIFIED, ALTERED OR CHANGED BY ANY PERSON OR ENTITY OTHER THAN THE SELLER WITHOUT SELLER'S PRIOR WRITTEN APPROVAL, AND ANY SUCH MODIFICATION, ALTERATION OR CHANGE SHALL IMMEDIATELY VOID AND CANCEL ALL WARRANTIES WITH RESPECT TO THE AFFECTED PRODUCTS.**

9. **REMEDIES OF BUYER:** Seller, at its sole option, will replace or repair, at the delivery point specified herein, any Product or component thereof manufactured by it that is proven to be defective or otherwise fails to conform to the conditions of this contract, or (2) repay Buyer the price paid for such Product, plus any transportation charges paid by Buyer in addition to such price; *provided, however*, that the foregoing (a) does not cover damage caused by improper use, storage, handling or normal wear and tear, including but not limited to any effects of weathering, misuse, alteration or neglect, (b) does not apply to defects arising from Buyer's faulty maintenance or unauthorized modification or alteration of the Product, (c) does not cover damage from handling in shipment, (d) does not cover damage from accident, disaster or event of force majeure, (e) will be void in the event the Product is operated in a manner inconsistent with Seller's instructions and manuals for the use thereof, (f) requires that any allegedly defective Product or components thereof be returned to Seller if requested by Seller, and (g) will not operate to extend any warranty applicable to any repaired Product or component thereof, except that components provided in replacement of defective components will be covered by any applicable warranty. **BUYER'S REMEDIES FOR ANY FAILURE OF SELLER TO COMPLY WITH ITS WARRANTY OR CONTRACT OBLIGATIONS SHALL BE LIMITED EXCLUSIVELY TO THE RIGHT TO REPAIR OR REPLACEMENT OF ANY PRODUCT OR COMPONENT THEREOF THAT IS PROVEN TO BE DEFECTIVE TO THE SATISFACTION OF SELLER OR FAILS TO OTHERWISE CONFORM TO THE CONDITIONS OF THIS CONTRACT OR TO REPAYMENT OF THE PURCHASE PRICE, AS ABOVE PROVIDED.**
10. **LIMITATION OF LIABILITY:** NOTWITHSTANDING ANY PROVISION CONTAINED HEREIN, SELLER SHALL NOT BE LIABLE IN CONTRACT, IN TORT (INCLUDING BUT NOT LIMITED TO NEGLIGENCE OR STRICT LIABILITY), INDEMNIFICATION OR OTHERWISE FOR DAMAGE TO OR LOSS OR USE OF PROPERTY OR EQUIPMENT, INJURY TO PERSONS (INCLUDING DEATH) CAUSED BY, WITHOUT LIMITATION, MISUSE, UNSAFE OPERATION, MODIFICATION, ALTERATION OR CHANGE OF THE PRODUCTS, LOSS OF TIME, LOSS OF PROFITS OR REVENUE, LOSS OF GOODWILL, INTERRUPTION OF BUSINESS, COST OF CAPITAL, COST OF TEMPORARY PROPERTY OR EQUIPMENT (INCLUDING ADDITIONAL EXPENSES INCURRED IN USING EXISTING FACILITIES), OR FOR ANY SPECIAL, INDIRECT, INCIDENTAL, OR CONSEQUENTIAL DAMAGES, REGARDLESS OF WHETHER SELLER (A) HAS BEEN INFORMED OF THE POSSIBILITY OF SUCH DAMAGES OR (B) IS NEGLIGENT. THIS WARRANTY GIVES BUYER SPECIFIC

PRODUCT WARRANTY AND RETURN POLICY

LEGAL RIGHTS, AND BUYER MAY ALSO HAVE OTHER RIGHTS WHICH VARY FROM STATE TO STATE. SOME STATES DO NOT ALLOW THE EXCLUSION OR LIMITATION OF INCIDENTAL OR CONSEQUENTIAL DAMAGES, SO THE ABOVE LIMITATION OR EXCLUSION MAY NOT APPLY TO BUYER.

- 11. INDEMNIFICATION:** Buyer hereby agrees to and does release, indemnify, defend with competent and experienced counsel and hold harmless Seller, its subsidiaries, affiliates and divisions, and their respective directors, officers, employers, agents and representatives from and against any and all claims, liabilities, damages, actions, causes of action, suits, demands, losses, costs and expenses (including, but not limited to, attorneys' fees and disbursements and court costs), arising out of any third party claim, whether in contract, breach of warranty, tort (including, but not limited to, strict liability, negligence or fraud), or any other cause of action or claim (including but not limited to any copyright, trademark, patent, trade secret or any other intellectual property cause of action or claim by a third party claiming rights in or to products sold or offered for sale by Seller), arising from or by reason of: (1) any liability for which Seller is not responsible under the terms of this contract including, but not limited to, those liabilities for which Seller has specifically disclaimed liability hereunder; (2) any breach by Buyer of any term or provision of this contract; (3) the negligence or willful misconduct of Buyer, its agents, employees, representatives or contractors; (4) any personal injury or death to any person or persons including, but not limited to, employees of Buyer or any other person, and any damage to or destruction of the property or equipment of any person, firm or entity, arising out of the acts or omissions of Buyer or its employees, agents, representatives or contractors (including, but not limited to, operation of the Products in any unsafe or hazardous manner, misuse of the Products, failure to comply with Seller's specifications or instructions related to the Products, or removal, disconnection or disengagement of any safety device or feature on the Products); or (5) any modification, alteration or change of the Products or any component thereof without Seller's prior written approval or the use of the Products in an application or environment for which they were not designed. This indemnification obligation shall not be limited in any manner by any limitation on the amount or type of damages, compensation or benefits payable by or for Buyer or any other person, firm or entity under workers' or workmen's compensation acts, disability benefit acts or any other employee benefit acts.
- 12. MODIFICATION OF PRODUCTS:** Buyer hereby agrees not to modify, alter or change the Products or any components thereof, in any way, including the removal, disconnection or disengagement of any safety device or feature on the Products, without providing Seller with prior written notification of such modification, alteration or change and receiving written approval thereof from Seller. **ANY UNAUTHORIZED MODIFICATION, ALTERATION, REPAIR OR SERVICE OF THE PRODUCTS BY OR ON BEHALF OF BUYER SHALL IMMEDIATELY VOID AND CANCEL ALL WARRANTIES WITH RESPECT TO THE AFFECTED PRODUCTS.**
- 13. SECURITY INTEREST AND DEFAULT:** Notwithstanding any provision contained herein, Buyer hereby grants to Seller a purchase money security interest in all of the Products for the purpose of securing payment of the purchase price and Seller shall have a first lien against all such Products until the purchase price is paid in full. Buyer appoints Seller as Power of Attorney to sign and file any financing statement required to perfect such security interest. If Buyer fails to pay to Seller any portion of the purchase price in accordance with the terms set forth herein or otherwise materially fails to perform any of its obligations hereunder (a "Default"), all amounts paid by Buyer to Seller at any time may, at the sole option of Seller, be retained by Seller. In addition to the foregoing, Seller will be permitted, upon the occurrence of a Default, to delay or cancel shipment of the Products or any portion thereof and/or remove and recover any Products. The foregoing remedies will not be deemed to limit the remedies available to Seller upon the occurrence of a Default by Buyer hereunder.
- 14. CANCELLATION:** If Buyer terminates this contract, in whole or in part, or refuses to accept or delays delivery of the Products, Buyer shall reimburse Seller for Seller's lost profits, together with all costs reasonably incurred by Seller. Orders for Products in process may not be cancelled by Buyer under any circumstances. Orders for Products in process may not be changed except with Seller's written consent and upon agreement by the parties as to an appropriate adjustment in the purchase price therefor. Products as to which delivery is delayed due to any cause within Buyer's control may be placed in storage by Seller at Buyer's risk and expense and for Buyer's account. The foregoing will not be deemed to limit any other remedies which Seller has hereunder or at law.
- 15. DELAYS:** Seller shall not be liable for failure to perform or for delay in performance due to causes beyond its reasonable control including, but not limited to: fire; explosion; flood; war; riot; embargo; accidents at Seller's facility; strike or other difference with workmen; shortage of utility, facility, material or labor; delay in transportation, breakdown or accident; act or requirements of any governmental or civil authority; terrorist act or threat of terrorist act; acts or omission of Buyer; acts of God; or any cause beyond Seller's reasonable control. If any such event occurs, Seller shall have such additional time within which to perform this contract as may be reasonably necessary

under the circumstances and shall have the right to apportion its production among its customers in such a manner as it may consider to be equitable, and Buyer will not be entitled to refuse delivery or otherwise be relieved of any obligations as the result of such delay. Notwithstanding the foregoing, nothing contained herein shall relieve Buyer of the obligation to pay in full the purchase price or any other amounts due for Products actually delivered hereunder.

SELLER SHALL NOT BE LIABLE FOR ANY DAMAGES ATTRIBUTABLE TO THE DELAYED SHIPMENT OR LATE DELIVERY OF THE PRODUCTS INCLUDING, WITHOUT LIMITATION, INDIRECT, SPECIAL, INCIDENTAL OR CONSEQUENTIAL DAMAGES RELATING THERETO.

- 16. INSPECTION CHARGES:** Seller shall not be liable for any charges by others for inspection and testing of the Products.
- 17. ESTIMATIONS:** All weights, lengths, dimensions, performance data and specifications set forth herein or in any brochure, sales literature or other documentation provided by Seller, its directors, officers, employees, agents or representatives are approximations and guidelines and should be considered as estimates only.
- 18. WAIVER:** Any waiver by Seller of any breach of default by Buyer of any of Buyer's obligations under this contract, or any failure by Seller to enforce any rights arising under this contract, shall not be construed as a waiver of any other breach or default by Buyer or of Seller's right to enforce its rights in any other circumstances.
- 19. SEVERABILITY:** If any provision(s) of these Terms and Conditions are held by a court of competent jurisdiction to conflict with any federal, state or local law or otherwise are held to be invalid or unenforceable, either generally or with respect to any particular facts or circumstances, such provision(s) shall be deemed to be of no force and effect, either generally or with respect to the applicable particular facts or circumstances, and these Terms and Conditions shall continue in full force and effect and shall be construed as if such provision(s) had not been included herein or had not been applicable to the circumstances resulting in such holding.
- 20. ASSIGNMENT:** Neither this contract nor any rights or obligations hereunder may be assigned by Buyer without the prior written approval of Seller.
- 21. BINDING EFFECT:** The parties' obligations hereunder shall be binding upon, and shall inure to the benefit of, the parties hereto and their respective successors and assigns.
- 22. MODIFICATION:** No terms or conditions, other than those stated herein, and no agreement or understanding, oral or written, in any way purporting to amend, modify or revise these Terms and Conditions or this contract shall be binding on the parties hereto unless hereafter made in writing signed by each of the parties.
- 23. APPLICABLE LAW:** These Terms and Conditions, including, without limitation, the validity of this contract, the capacity of the parties hereto, the form of this contract and the interpretation of its language, and the parties' performance thereof, shall be governed by the internal laws of the Commonwealth of Pennsylvania without reference to its choice of law provisions. In the event of any breach of contract by Seller or Buyer or any dispute relating to this contract, Buyer consents to the exclusive jurisdiction of the state and federal courts located in Allegheny County in the Commonwealth of Pennsylvania, and Buyer waives any objections or defenses it may have to jurisdiction or venue in such courts. The parties further agree that any action at law or equity against Seller arising hereunder may be brought only in the state and federal courts located in Allegheny County, Pennsylvania, and that such courts shall have exclusive jurisdiction over any such actions. In the event of any legal proceeding between the Seller and Buyer relating to these Terms and Conditions, neither party may claim the right to a trial by jury, and both parties waive any right they may have under applicable law or otherwise to a right to trial by jury. No actions commenced or removed to the federal courts located within Allegheny County, Pennsylvania, shall be transferred to any federal court located outside Allegheny County, Pennsylvania, and each party waives any other venue to which it may be entitled by domicile or otherwise. The application to these Terms and Conditions of the U.N. Convention on Contracts for the International Sale of Goods is hereby expressly excluded.
- 24. INCONSISTENCIES:** In event of any inconsistency between the Terms and Conditions set forth herein and the terms and conditions of any purchase order or other document from Buyer, the Terms and Conditions herein shall prevail.
- 25. NOTICE:** Any notice required or permitted to be given under these Terms and Conditions shall be in writing and shall be delivered to the party to receive such notice by registered or certified mail, addressed to Buyer at its address last known to Seller and to Seller at 3 Riversea Roads, Pittsburgh, PA 15233.
- 26. INTEGRATION:** Any clause required to be included in a contract of this type by any applicable law or administrative regulation having the effect of law shall be deemed to be incorporated herein. No promise, understanding, representation, inducement or condition not set forth herein has been made or relied on by any party.

Terms & Conditions revised 02.05.10

PATTERSON

SAFER.EASIER.FASTER.

27

Visit us online! Visit www.pattersonmfg.com
for complete product information or call 412.322.2012

HOW TO ORDER

870 Riversea Road
Pittsburgh, Pennsylvania 15233
Phone: 412.322.2012
Fax: 412.322.2785

For more information on Patterson products, and for immediate service, please call us at **412.322.2012**.

SALES & SUPPORT CONTACTS:

Winches:

Office: 412.322.2012

Email: info@pattersonmfg.com

Ratchet Turnbuckles:

Russ Mayhew, Inside Sales Manager

Office: 412.322.2012

Email: russ.mayhew@pattersonmfg.com

870 Riversea Road
Pittsburgh, Pennsylvania 15233
Phone: 412.322.2012
Fax: 412.322.2785

Last updated: November 2010